



GMC Multiworker 1650

General

Yard number GMC 0904
 Basic Functions Towing, pushing, dredging support Ø 0,1 recovery
 Classification Bureau Veritas / WorkBoat Code UK

Painting Hempel paint system

Dimensions

Length o.a. 16.00 mtr
 Beam o.a. 5.00 mtr
 Depth at sides 1.50 mtr
 Draught aft 1.21 mtr

Tank capacities

Fuel oil 12 m³

Performances

Bollard pull ahead 6.0 ton(m)
 Speed 7.0 knots

Propulsion system

Main engines 2x Volvo Penta D 9 MH – 355 hp
 Total power 700 HP @ 1800 rpm
 Gearboxes 2x Twin Disc MG 5091 DC / 3.82:1
 Propulsion 2x Two bronze fixed pitch propellers
 Diameter 2x 800 mm in nozzles
 Steering system Sperry powered hydraulic



Noordeinde 121
 3341 LW Hendrik Ido Ambacht
 T: 078-7440105
 E: info@groeneveldtmarinetradng.com
 KVK: 55578381
 BTW: NL8517.71.956.B01
 BIC: INGBNL2A
 IBAN: NL70INGB0006787499

Auxiliary Equipment

Fuel oil system	Duplex filters
Battery set	2x 24V 200 Ah
Bilge pump	Hand-operated

Ø Fuel/cargo transfer Pump SIHI AKHK 5101, 20 m³/ hr

Ø Generator set Cooling system Hatz 17,5 kVA 230/400 V 50 Hz
Air - cooled

Deck lay-out

Anchor	75 kg Pool (High Holding Power)
Chain	75 m short link, 13 mm
Anchor winch	Hydrolic operated
Deck crane	Fassi / CPS 36 t/meter
Ø Anchor handling winch	DMT 12 ton at 5m/min
Ø Towing Hook	Disc type 15 ton

Accommodation

The wheelhouse is completely insulated and finished with durable modern lining, acoustical Dampa ceiling, synthetic floor and is equipped with dashboard, time clock, Ø settee, air-conditioning and Ø heating. Windows are fitted in aluminum frames.

Nautical and communication equipment

Searchlight	Den Haan 170 W 24 V
Horn	Ongaro
Fluxgate compass	Radio Zeeland Sigma 345
VHF radio Telephone	Sailor 6248
VHF Hand Held	Jotrun TR-20
GPS	Furuno GP-32

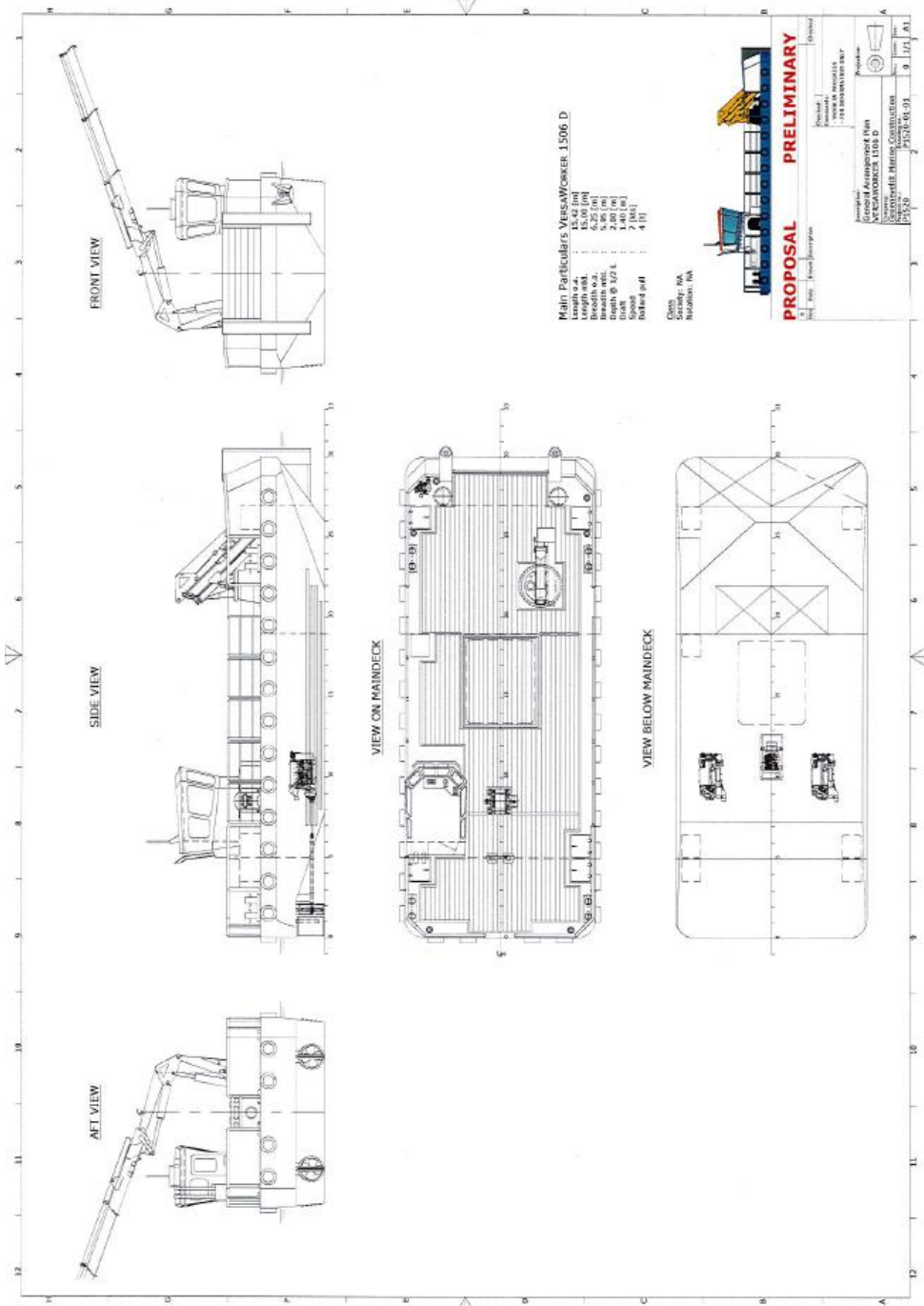
Casco in stock for short deliverytime

*Picture shows an Artist Impression

Ø = optional equipment



Noordeinde 121
3341 LW Hendrik Ido Ambacht
T: 078-7440105
E: info@groeneveldtmarinetradng.com
KVK: 55578381
BTW: NL8517.71.956.B01
BIC: INGBNL2A
IBAN: NL70INGB0006787499



Main Particulars VersaWorker 1506 D

Length o/w	15.00 (m)
Length w/d	6.50 (m)
Beam w/d	5.50 (m)
Depth @ 1/2 L	2.00 (m)
Max Draft	2 (m)
Speed	7 (kts)
Rated lift	4 (t)

Class
 Surveyor: IMA
 Notation: NA



PROPOSAL

Project: **PRELIMINARY**

Client: **Greenveeldt Marine Construction**
 10000 Greenveeldt Blvd
 P.O. Box 10000
 11550-10000

Project No: **1506 D**

Date: **09/10/2015**

Scale: **1:100**